

# SWIRON 2.8/50

## SWIRON 2.8/50

The SWIRON high-performance lens with either C- or V-Mount is extremely robust and insensitive to rough ambient conditions, with the result that the lens retains its high optical imaging performance in industrial environments. The secure locking of the iris and focus settings and the SWIR coating of 900 – 1700 nm is standard for this lens. This lens is suitable for highest resolution sensors down to 12.4 µm pixel size. A special lacquer for stray light reduction guarantees best imaging performance in all applications.



SWIRON 2.8/50 with C-Mount

### Key Features

- Suitable for 2048 Pixel 25.6mm sensor with 12,4µ Pixel pitch
- Minimized focal shift
- Distortion less than 1%
- Designed for 900 – 1700nm
- Usage of highly transparent glass for SWIR range
- Focus and iris setting lockable

### Applications

- bio-pharmaceuticals / medical
- fluid inspection
- food control / agriculture
- plastic waste sorting
- solar inspection
- LIDAR
- Hyperspectral imaging / material testing

### Technical Specifications

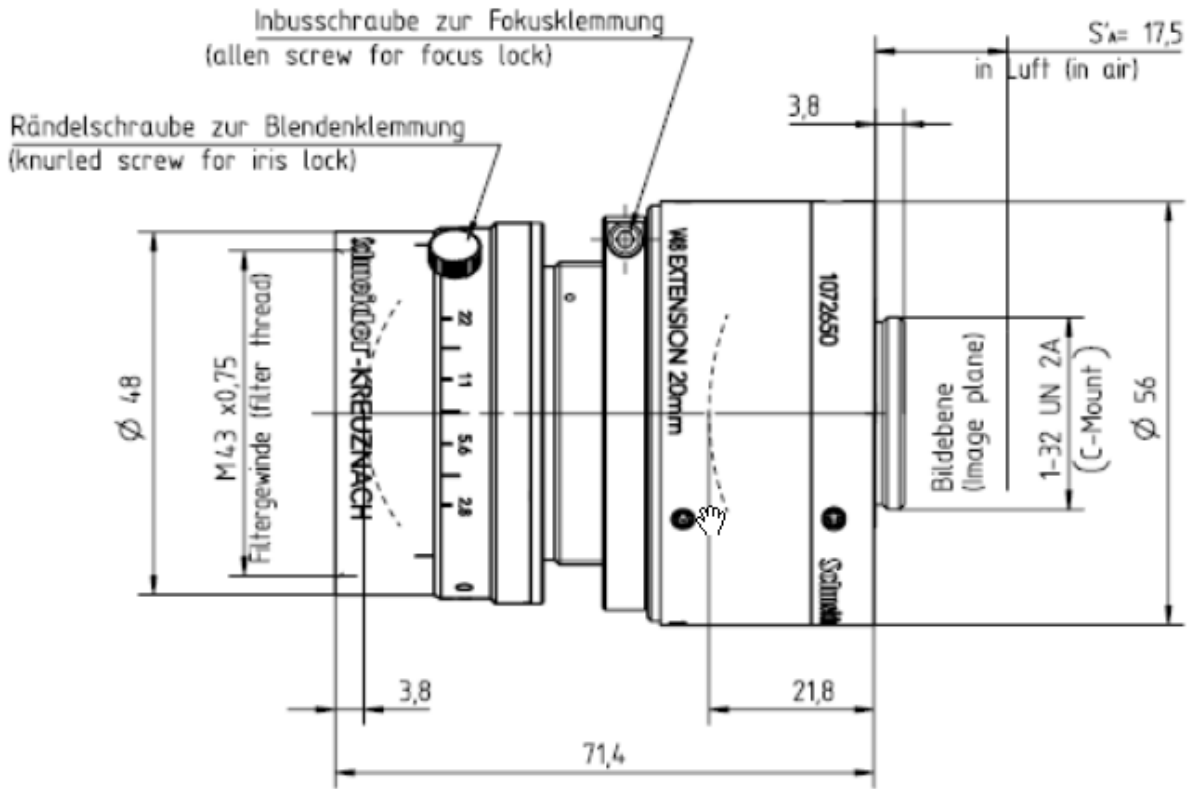
Focal length	50 mm	
F-number	2.8 - 16	
Working Distance	0,25 m – 2,50 m	
Image circle	25,4 mm	
Transmission	900 - 1700 nm	
Filter thread	M 43 x 0,75	
Interface	C-Mount	V48 -Mount
Dimensions	75,2 mm x 56 mm ∅	60,4 mm x 55 mm ∅
Weight	418 g	297 g
Number	1088501	1087723

### Contact

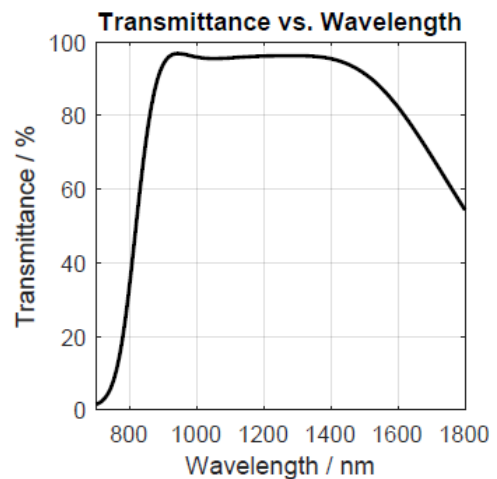
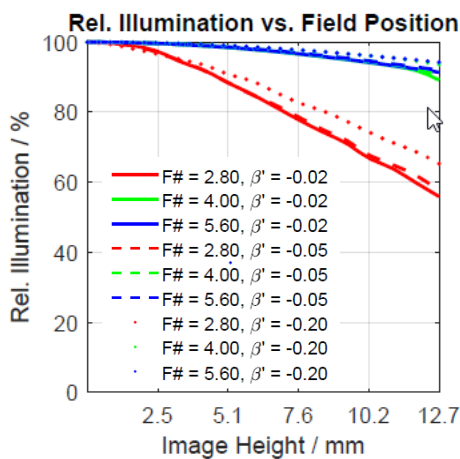
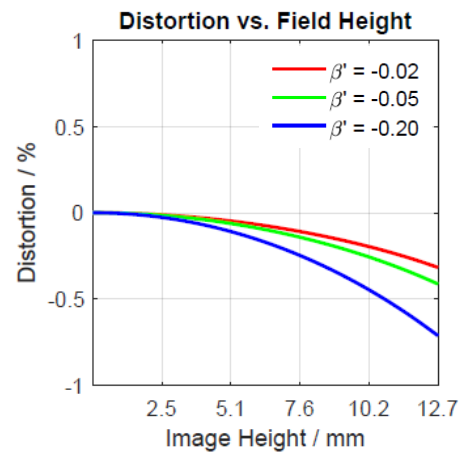
Jos. Schneider Optische Werke GmbH  
 Ringstraße 132  
 55543 Bad Kreuznach  
 Germany  
 Phone +49 671 601-387  
 Fax +49 671 601-286  
[www.schneiderkreuznach.com](http://www.schneiderkreuznach.com)  
[industrie@schneiderkreuznach.com](mailto:industrie@schneiderkreuznach.com)

Schneider Optical Technologies Co., Ltd  
 Rm.A505 Yingdali Science Park,  
 Hongmian Rd.Futian Free Trade Zone,  
 Shenzhen 518038  
 P.R.China  
 Phone +86 755 88 32 11 70  
 Fax +86 755 88 32 11 75  
[www.schneiderkreuznach.com](http://www.schneiderkreuznach.com)  
[info@schneider-asiapacific.com](mailto:info@schneider-asiapacific.com)

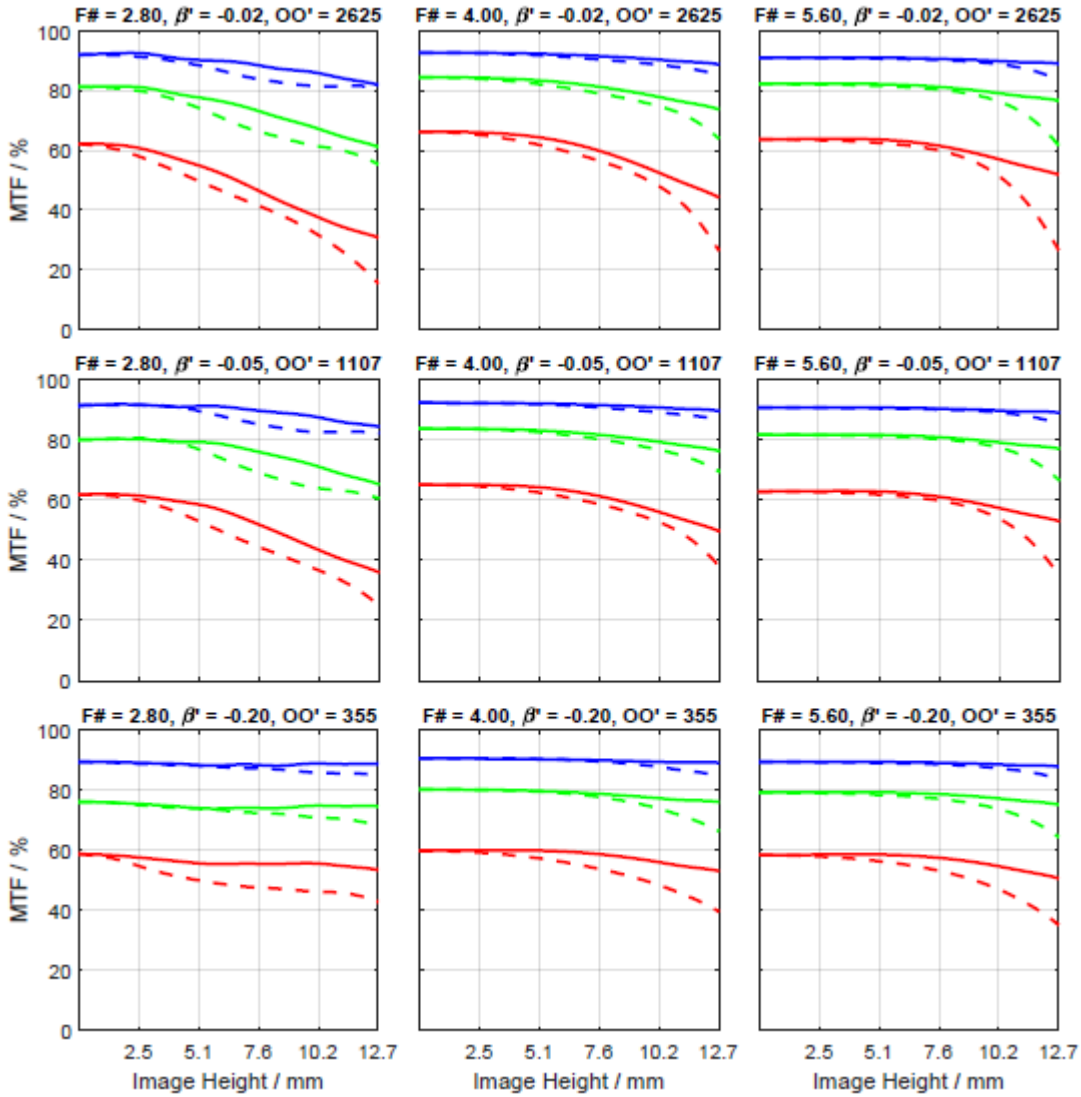
Schneider Optics Inc.  
 285 Oser Ave.  
 Hauppauge, NY 11788  
 USA  
 Phone +1 631 761-5000  
 Fax +1 631 761-5090  
[www.schneideroptics.com/industrial](http://www.schneideroptics.com/industrial)  
[industrial@schneideroptics.com](mailto:industrial@schneideroptics.com)



$f_{eff}$ / mm	50.05
SF / mm	-10.80
S'F' / mm	33.20
HH' / mm	-10.34
$\beta'_P$	1.26
SEP / mm	28.91
S'AP' / mm	-29.88
$\Sigma d$ / mm	45.75



Spectrum	SWIR					
Wavelengths [nm]:	920	1070	1220	1370	1520	1670
Weights:	16,9	18,2	17,7	17,1	15,9	14,2



- - - 9.0 lp/mm, tangential
- 9.0 lp/mm, radial
- - - 17.0 lp/mm, tangential
- 17.0 lp/mm, radial
- - - 34.0 lp/mm, tangential
- 34.0 lp/mm, radial